



SUPERIOR Internal

UPVC DOORS

stylish and maintenance free

NEVER NEED
TO PAINT

The Internal UPVc Collection

GRETNA - Harris

Gretna & Gretna Centre - Two stunning NEW additions to the internal door range.

TIC SKIN



GRETNA - Solid



GRETNA - Finlay



GRETNA - Clear

GRETNA

one

GRETNA DOOR SIZES

Width - min: 640mm max: 864mm

Height - min: 1830mm max: 2070mm

*NEW
to the
range*

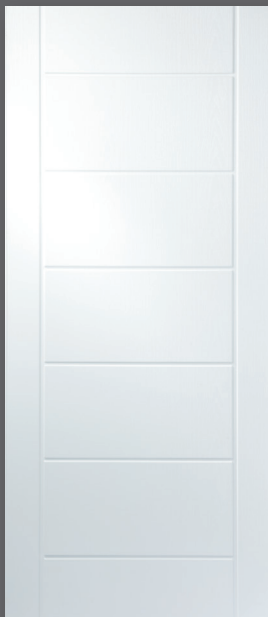


GRETNA CENTRE -
Ceres



GRETNA CENTRE - Lea

GRETNA CENTRE



CAROLINA -
Solid

A Modern contemporary
addition to our range of
solid doors.

CAROLINA - Solid

CAROLINA DOOR SIZES

Width - min: 560mm max: 864mm
Height - min: 1830mm max: 2070mm



CAROLINA

two

The Internal UPVc Collection

ALEXANDER -
Clova
Bold, cutting edge and vibrant.



TIC SKIN



ALEXANDER - Solid



ALEXANDER - Tay



ALEXANDER - Sandblast
Border

ALEXANDER

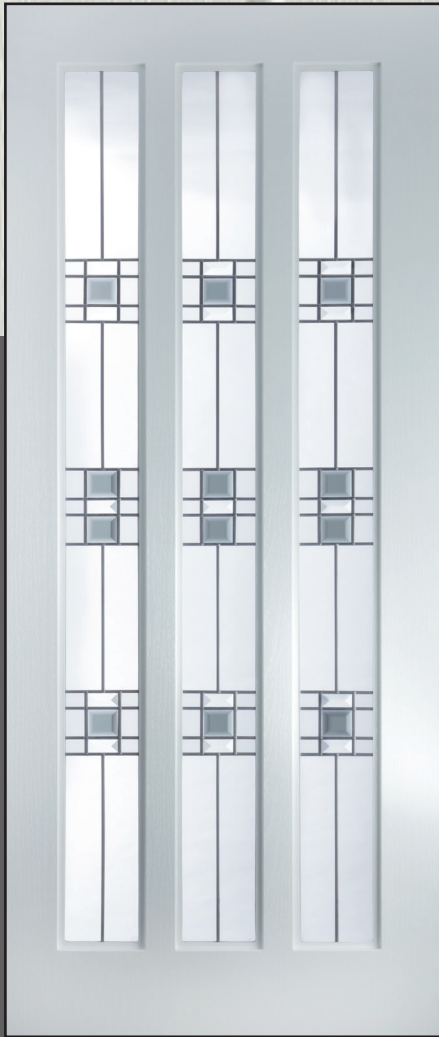
three

ALEXANDER DOOR SIZES

Width - min: 600mm max: 864mm

Height - min: 1800mm max: 2070mm

*NEW
to the
range*



KIELDER - Fearn
Designed with maximum light in mind.



KIELDER - Solid

KIELDER



KIELDER - Bora

KIELDER DOOR SIZES

Width - min: 600mm max: 864mm
Height - min: 1800mm max: 2070mm



four

GEMINI

TIC SKIN

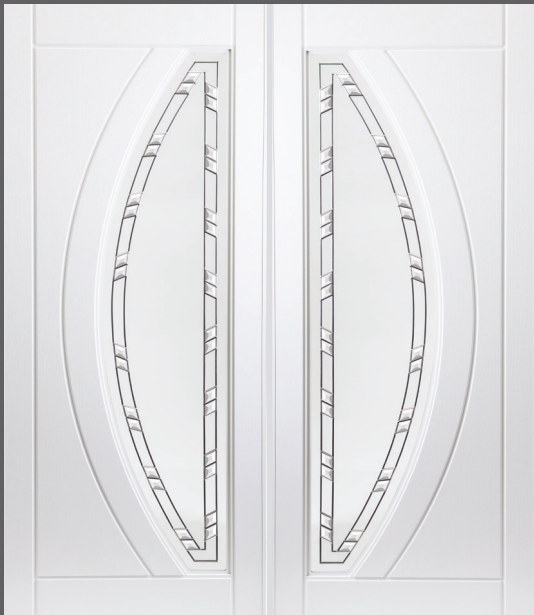


The Internal UPVc Collection

GEMINI - Prism
Designed to work perfectly in a French door combination as well as a single door.



GEMINI FRENCH DOORS - Discus



GEMINI FRENCH DOORS - Prism



GEMINI FRENCH DOORS - Twilight



GEMINI - Twilight

five

GEMINI DOOR SIZES

Width - min: 560mm max: 864mm

Height - min: 1850mm max: 2070mm



PISCES - Abstract

Modern, elegant and stunning in its concept.



PISCES - Rose

PISCES



PISCES DOOR SIZES

Width - min: 560mm max: 864mm
Height - min: 1850mm max: 2070mm

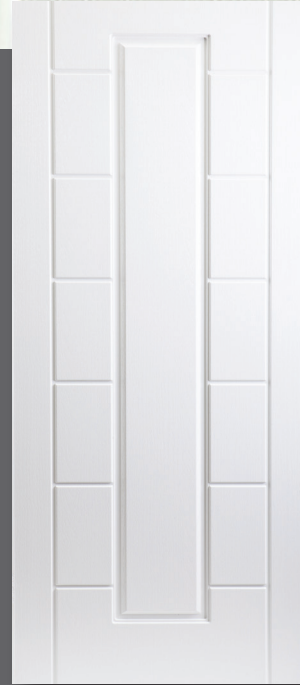
The Internal UPVc Collection

CAIRNGORM - Linton

Bold and exciting.
Designed to make a statement.



TIC SKIN



CAIRNGORM - Solid



CAIRNGORM - Clematis

CAIRNGORM

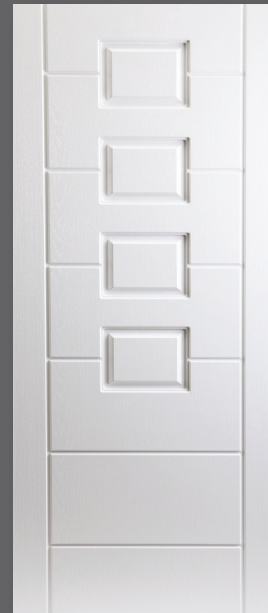
THISTLE



THISTLE - Alexandria



THISTLE - Rhu



THISTLE - Solid

THISTLE

A simple and effective variation on the cairngorm.

SELKIRK

A design allowing maximum light with maximum style.

DOOR SIZES

CAIRNGORM

Width - min: 560mm max: 864mm
Height - min: 1880mm max: 2070mm

THISTLE

Width - min: 560mm max: 864mm
Height - min: 1880mm max: 2070mm

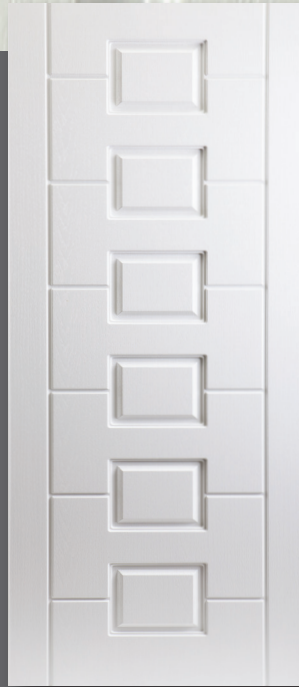
LOMOND

Width - min: 560mm max: 864mm
Height - min: 1880mm max: 2070mm



LOMOND - Diamonds

A variation on the Thistle allowing additional light.



LOMOND - Solid



LOMOND - Jewelled Vine

LOMOND



SELKIRK - Sandblast Prestwick



SELKIRK - Sandblast Irvine



SELKIRK

SELKIRK

Width - min: 560mm max: 864mm
 Height - min: 1880mm max: 2070mm

SELKIRK
 - Ayr

eight

The Internal UP

CLASSIC

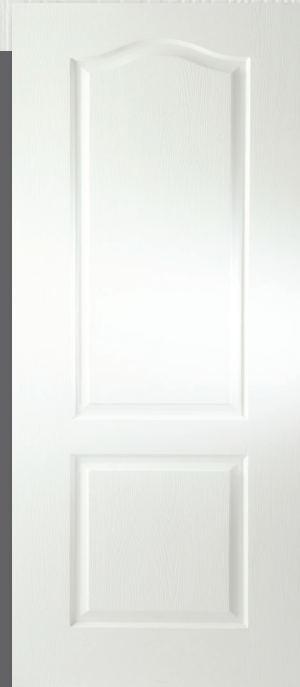
GRAIN SKIN



CLASSIC 2 - Starburst

One of our most popular designs featuring glass bevels & leadwork.

Also available as a Classic 1.



CLASSIC - Solid



CLASSIC 1 - Sandblast
Floral Brocade



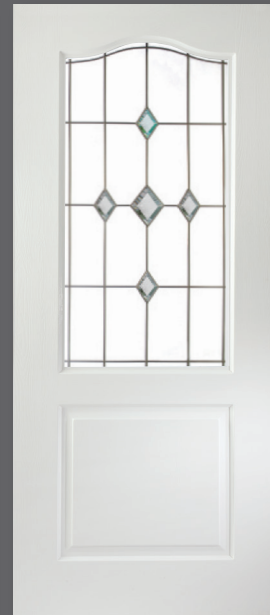
CLASSIC 1 - Sandblast
Mackintosh



CLASSIC 1 - Sandblast
Starburst (Beech)



CLASSIC 1 - Diamond
Sparkle



CLASSIC 1 - Galaxy



CLASSIC 1 - Georgian Lead
(Beech)

nine

CLASSIC DOOR SIZES

Width - min: 510mm max: 864mm

Height - min: 1830mm max: 2070mm

Vc Collection



CLASSIC 1 FRENCH DOORS - Sandblast Mackintosh



CLASSIC 1 - Obscure Glass



CLASSIC 1 - Bespoke Glass



CLASSIC 1 - Fusion (Blue)



CLASSIC 1 - Rose Sash



CLASSIC 1 - Rennie Mackintosh

The Internal UP

GRAINGER

GRAIN SKIN



GRAINGER 2 - Callini

A more intricate sandblast design with a choice of coloured bevels.



GRAINGER 2 - Solid



GRAINGER 2 - Abstract Dingwall



GRAINGER 2 - Campsie



GRAINGER 2 - Black Fusion



GRAINGER 2 - Decra Resin 2



GRAINGER 2 - Fusion 2 Blue
Also available in Green, Red and Black.



GRAINGER 2 - Sandblast Bo'ness

eleven

GRAINGER DOOR SIZES

Width - min: 650mm max: 864mm

Height - min: 1855mm max: 2070mm

Vc Collection

GRAINGER 2 - Sandblast Beaumont

One of our new range of contemporary sandblasted glass designs.



GRAINGER 2 FRENCH DOORS - Decra Resin 1



GRAINGER 2 - Sandblast Mackintosh (Beech)



GRAINGER 2 - Sandblast Border



GRAINGER 2 - Victoriana



GRAINGER 2 - Sandblast Argyle



GRAINGER 2 - Sandblast Bancroft

The Internal UPVc Collection

GRAINGER 2 - Sandblast Emerald

Sandblasted glass design with fusion tile. Also available in Blue, Red and Black.

GRAIN SKIN



GRAINGER



GRAINGER 2 - Kinross Blue
Also available in Green, Red, Black and Clear.



GRAINGER 2 - Troon



GRAINGER 2 - Sandblast Element



GRAINGER 2 - Sandblast Kincaid



GRAINGER 2 - Sandblast Mansfield



GRAINGER 2 - Ebony Jet



GRAINGER 2 - Denny

thirteen

GRAINGER DOOR SIZES

Width - min: 650mm max: 864mm
Height - min: 1855mm max: 2070mm

Sandblast designs predominately opaque, can be reversed.



ELDON - Crystal Jewel

This modern design is made using straight crystal cut lines and faceted polished glass jewels onto clear glass.

GRAIN SKIN



ELDON - Sandblast Water Dragon



ELDON - Sandblast Radial

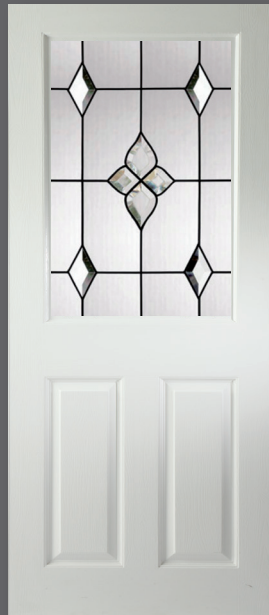
ELDON



ELDON - Galaxy



ELDON - Andromeda



ELDON - Expression



ELDON - Victoriana



ELDON - Decra Fusion 1

ELDON DOOR SIZES

Width - min: 710mm max: 864mm

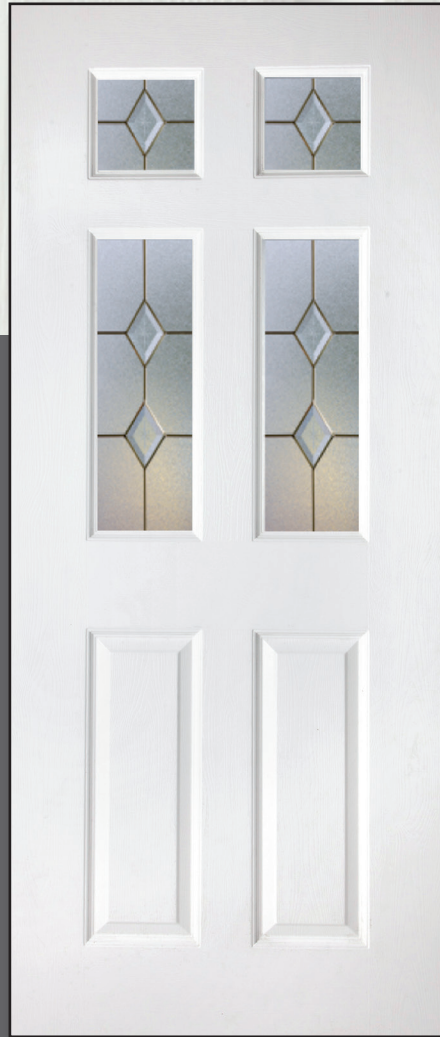
Height - min: 1855mm max: 2070mm

fourteen

The Internal UPVc Collection

WASHINGTON 4 - Diamond Bevels on Stippolyte

A traditional design using lead and diamond bevels onto an obscure style glass.



GRAIN SKIN



WASHINGTON - Solid (Beech)

WASHINGTON



WASHINGTON 2 - Sandblast
Border



WASHINGTON 4 - Decra
Resin



WASHINGTON - Bi-Fold

fifteen

WASHINGTON DOOR SIZES

Width - min: 610mm max: 864mm

Height - min: 1855mm max: 2070mm



CONTEMPORARY - Mackintosh Nairn

This stunning door features a modern Rennie Mackintosh influenced glass design.

TIC SKIN



CONTEMPORARY - Solid



CONTEMPORARY - Leven

CONTEMPORARY



CONTEMPORARY - Abstract Forfar



CONTEMPORARY - Oban



CONTEMPORARY - Elgin



CONTEMPORARY - Dunoon

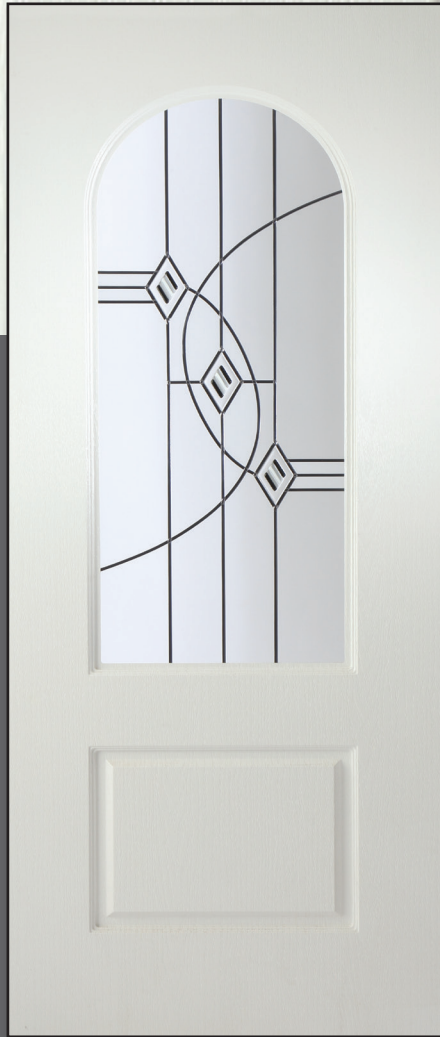
CONTEMPORARY DOOR SIZES

Width - min: 600mm max: 864mm
 Height - min: 1220mm max: 2070mm

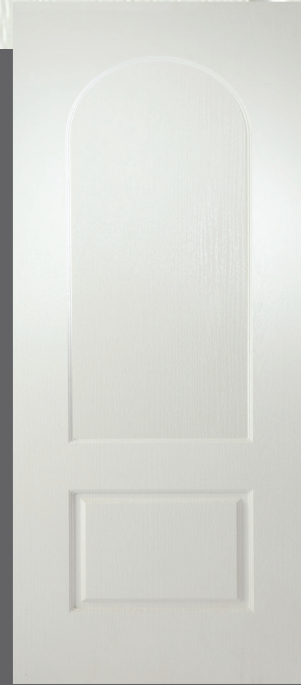
The Internal UPVc Collection

ARCHED TOP - Montrose

A combination of coloured fusion tiles, traditional antique leadwork and sandblast effect, combine to create this stunning design.



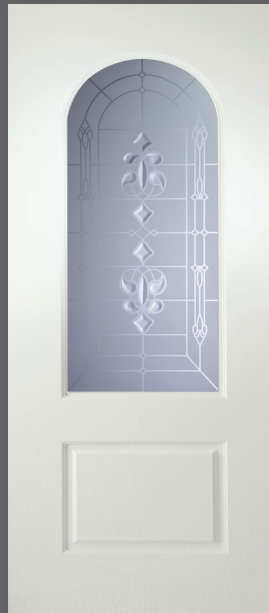
TIC SKIN



ARCHED TOP - Solid



ARCHED TOP - Sandblast
Floral Brocade



ARCHED TOP - Sandblast
Regal



ARCHED TOP - Sandblast
Lotus

ARCHED TOP

seventeen

ARCHED TOP DOOR SIZES

Width - min: 510mm max: 864mm

Height - min: 1735mm max: 2070mm



ELIZABETHAN SQUARE TOP - Carluke

A modern design using the latest in clear fused patterned tiles along with a sandblast pattern.

TIC SKIN



ELIZABETHAN SQUARE TOP - Solid
(Solid also available in Elizabethan World)

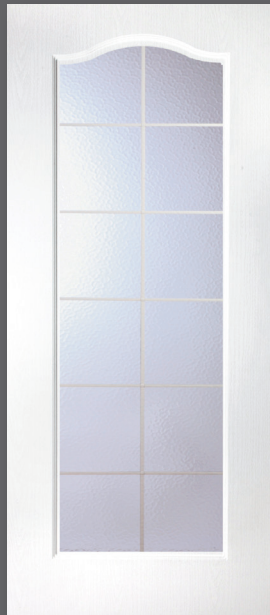


ELIZABETHAN SQUARE TOP - Mirror
Any solid to the outer face with Elizabethan Mirror to the inner.

ELIZABETHAN



ELIZABETHAN SQUARE TOP - Georgian Lead



ELIZABETHAN CURVE TOP - Georgian Lead



ELIZABETHAN CURVE TOP - Carluke

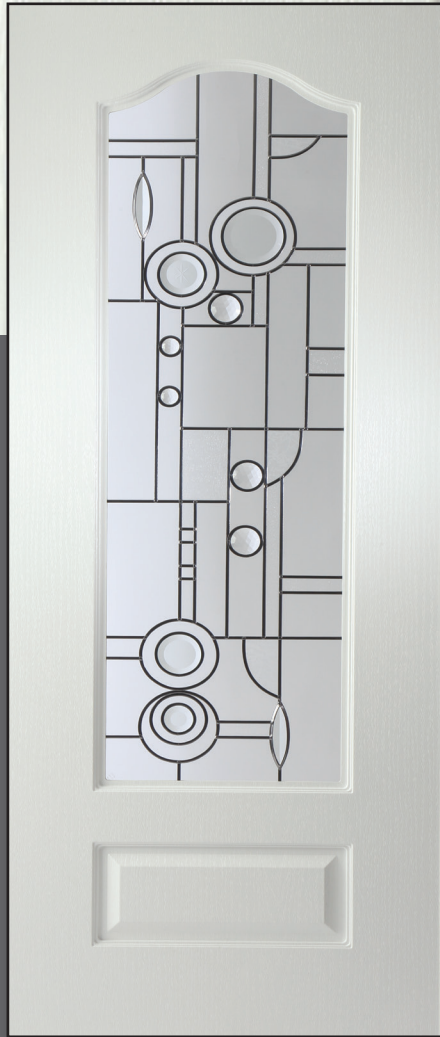
ELIZABETHAN DOOR SIZES

Width - min: 610mm max: 864mm
Height - min: 1830mm max: 2070mm

The Internal UPVc Collection

WINDSOR
- Abstract
Callendar

A modern abstract design.



TIC SKIN

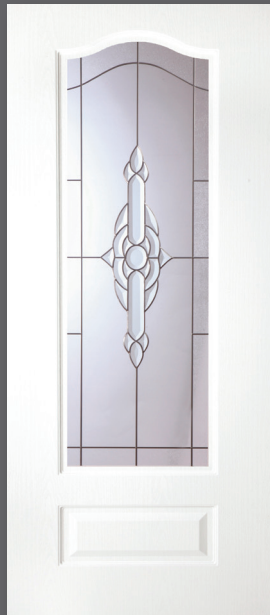


WINDSOR - Solid

WINDSOR



WINDSOR - Mackintosh
Greenock



WINDSOR - Reflection



WINDSOR - Side Panel



WINDSOR - Bi-Fold

nineteen

WINDSOR DOOR SIZES

Width - min: 590mm max: 864mm
Height - min: 1830mm max: 2070mm

WINDSOR SIDE PANEL SIZES

Width - min: 350mm max: 589mm
Height - min: 1830mm max: 2070mm



SWEPT TOP - Brechin

A stylish dual glazed door using traditional lead pattern alongside stunning glass bevels.

TIC SKIN



SWEPT TOP - Solid

SWEPT TOP



SWEPT TOP - Ebony Jet



SWEPT TOP - Kinross



SWEPT TOP - Abstract



SWEPT TOP - Bi-Fold

SWEPT TOP DOOR SIZES

Width - min: 630mm max: 864mm
 Height - min: 1855mm max: 2070mm

The Internal UPVc Collection

EDWARDIAN -
Diamond Cluster
A simple, very effective design.



TIC SKIN



EDWARDIAN - Solid

EDWARDIAN



EDWARDIAN - Mackintosh
Paisley



twentyone

EDWARDIAN DOOR SIZES

Width - min: 720mm
max: 864mm

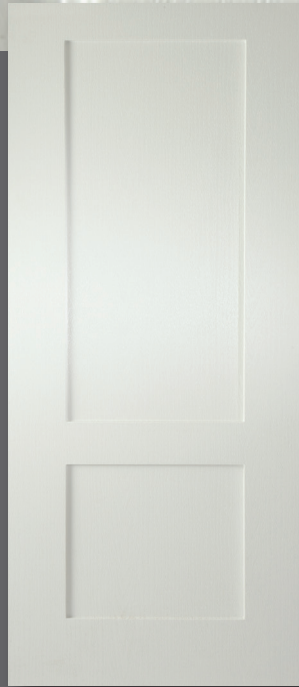
Height - min: 1780mm
max: 2070mm



SHAKER - Glenrothes

An attractive design on clear glass showing how colour can be used to enhance the door. A full spectrum of colours available.

TIC SKIN



SHAKER - Solid

SHAKER



SHAKER - Victoriana



SHAKER - Sandblast
Geneva



SHAKER - Sandblast
Granville



SHAKER - Braemar

SHAKER DOOR SIZES

Width - min: 510mm max: 864mm
Height - min: 1800mm max: 2070mm

twentytwo

The Internal UPVc Collection

CHARLOTTE - Abstract

A new modern addition to the internal door collection.

TIC SKIN

CHARLOTTE



CHARLOTTE - Prairie



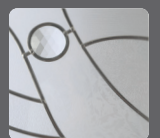
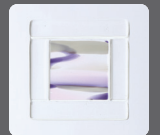
CHARLOTTE - Fusion 1



CHARLOTTE - Fusion 2



CHARLOTTE - Fusion 3



twentythree

CHARLOTTE DOOR SIZES

Width - min: 711mm max: 864mm

Height - min: 1830mm max: 2070mm



SAMANTHA - Solid

This simple and attractive door is available in solid only.

TIC SKIN

SAMANTHA DOOR SIZES

Width - min: 610mm max: 864mm

Height - min: 1830mm max: 2070mm

SAMANTHA



STABLE DOOR
- Victoriana



twentyfour



3" Hinges

Heavy duty washer butt style.

Handles

A range of traditional and contemporary handles to complement any home.



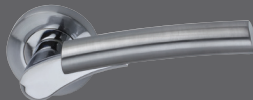
Argo



Flex



Aura



Hettie



Mimi



Yvette



Simone



B3310D



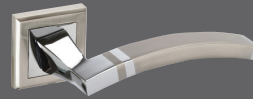
D4110DZ



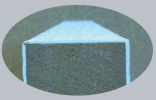
D2010DA



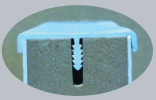
D4310DB



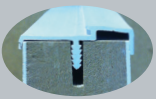
E6010DZ



Edge Band



Edge Strip



Hinge Strip



E60
Thumb Turn



E60
Escutcheon



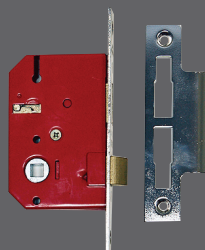
Privacy Lock

Privacy lock shown in Brass.
Mainly used for bathrooms & toilets.



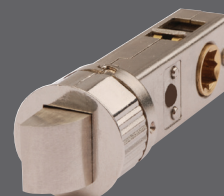
Escutcheon

Key Escutcheon shown
in Chrome.



Mortice Lock

3 Lever 2.5"
mortice lock.



Smart Latch

New innovation in latch,
which removes the
need to notch the edge
of the door.

Q. How are doors manufactured?

A. A 60mm subframe of MDF which allows trimming of up to 25mm per side and an extra high density polystyrene core for insulation giving six times the insulation value of a traditional interior door and improved impact resistance. The doors are finished using a 1mm UPVc plastic coating on either side. The 35mm sides of the door can either be edgebanded using white plastic or edgetrimmed by using a central groove in the door and a capped strip. The edgetrim can be flat or rebated; the rebated one will facilitate the hinge without the need for cutting out. Lock blocks are fitted centrally to both sides of the door, this eliminates potential mis-fitting of latches and other hardware.

Q. What styles are available?

A. There are currently 23 different styles available.

Q. Is there a choice of colour?

A. White is obviously the most popular colour and these doors can be edgebanded or edgetrimmed. Beech is available in certain styles with edgetrim only. They are only available edgebanded. Colours are UV stable.

Q. What is the maximum and minimum sizes?

A. Doors are manufactured to customers own specifications, bespoke. The max height is 2070mm (81.5in), max width is 864mm (34in), min width size is 450mm (17.75in) depending on door style. In some instances the moulds on the door will determine the size. See specifications shown for individual styles.

Q. How easy are they to fit?

A. Fitting is the same principle as a traditional wooden door using linear or metric measurements.

Q. Do you have a choice of door skin covering?

A. There are currently 2 types of skin, the traditional woodgrain effect or a tic skin (impregnated UPVc covering marked to create a grain effect).

Q. Do you need to paint the doors?

A. No. Doors are maintenance free and require only an occasional wipe down.

Q. Do the joints crack or move over time as traditional doors?

A. No. There can be no movement due to the manufacturing process.

Q. Does the door warp?

A. No. This should not be possible.

Q. I would like a set of French doors?

A. Any of our doors can be used as French doors, whether complementing the hall, conservatory entrance or separating living room from the dining room. We have a unique French door trim which requires no rebating.

Q. Do you supply handles?

A. Yes. We have options available with chrome or brass handles. We also have latches, hinges, thumb turn locks and star keys available if required.

Q. We would like to use UPVc doors for a wardrobe?

A. Doors can be adapted depending on style.

Q. Can a Loft hatch be manufactured?

A. Yes, cut to size. This will also be insulated to prevent heat loss.

Q. Is a guarantee offered?

A. Yes. A 3-year guarantee is given with internal doors from date of manufacture subject to terms and conditions, but please retain invoice.

Q. We have an awkward cupboard door, is it possible to supply?

A. Yes. Depending on size and style most openings can be accommodated. A matching grained flat panel is a good solution to this problem.

Q. Is the glass toughened on glazed doors?

A. Yes. All glass used is manufactured to 4mm and toughened to BSEN Standards, stamped with a kite mark.

Q. Are there any restrictions on glass designs?

A. No. A fully comprehensive range of designs are available as stock as seen in our brochures but individual requirements can always be discussed. Different styles of glass can be adapted to fit several types of doors, the choice is just about unlimited.

Q. Can we have obscure glass for privacy?

A. Yes. We have many types of glass available to provide various levels of privacy.

Q. Clear glass or decorative?

A. As all glass is produced in-house, virtually any options are available. By using lead and bevels in different combinations most designs can be created. We have an extensive range of coloured films and we are now producing resin lead work.

Q. Is it possible to have a Bi-fold door?

A. Yes certainly. Using 4 of the styles currently available, subject to size limitations.

Q. Can a side panel be matched to the door?

A. Yes. Glazing can be adapted to match most doors.

Q. Is skirting board or architrave available?

A. We stock a range of PVC coated skirting, architrave, cover boards, window boards and stop latts in different sizes and widths.



Gretna



Carolina



Alexander



Kielder



Classic



Grainger



Washington



Contemporary



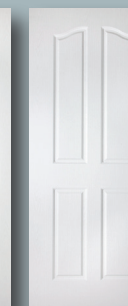
Arched Top



Elizabethan



Windsor



Swept Top



Edwardian



Shaker



Charlotte



Samantha



Gemini



Pisces



Cairngorm



Thistle



Lomond



Selkirk

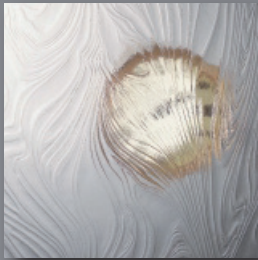


Stable Door



Shaped Doors available upon request.

Textured Glass Options



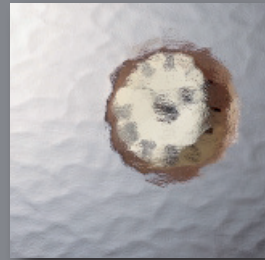
Taffeta™



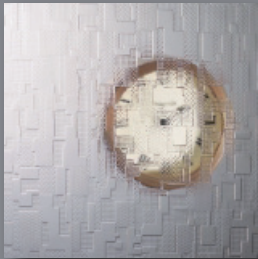
Pelerine™



Florielle™



Minster™



Digital™



Contora™



Everglade™



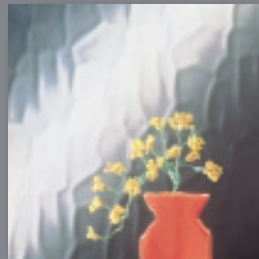
Mayflower™



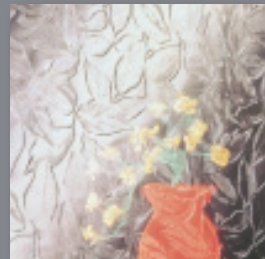
Chantilly™



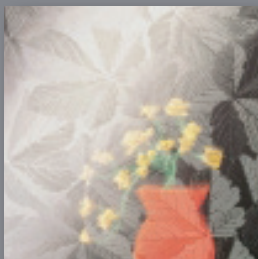
Oak™



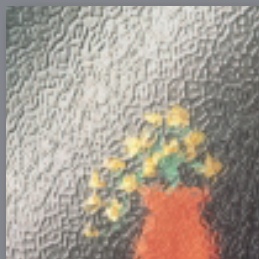
Flemish™



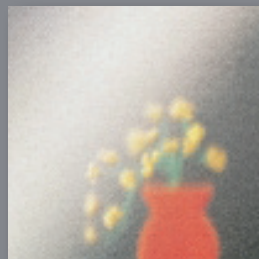
Autumn™



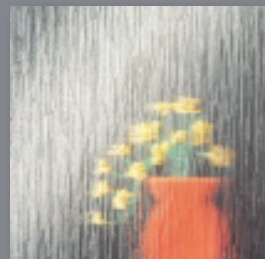
Sycamore™



Arctic™



Stippolyte™



Cotswold™

Bevel designs available on Clear, Stippolyte, Minster and Sandblast only.



All Glass featured in this brochure is toughened as standard.